



September 2018 Letting Report

Albert V. Shelby, III
**Director of Program
Delivery**

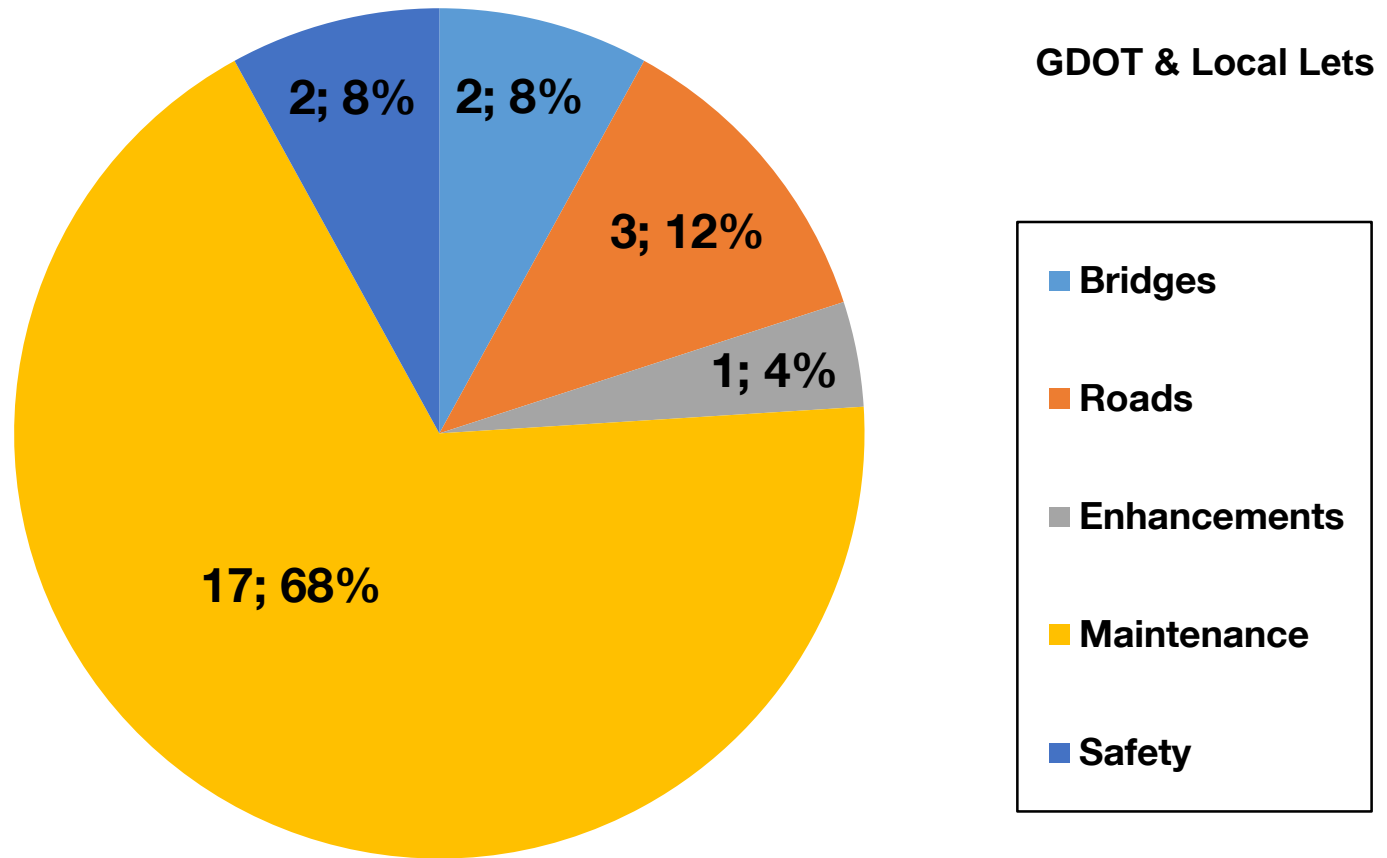
August 16, 2018



Fiscal Year 2019 Letting Report

Number of Projects Let in FY 2019

(Contractor Low Bid Award Data)



Total = 25

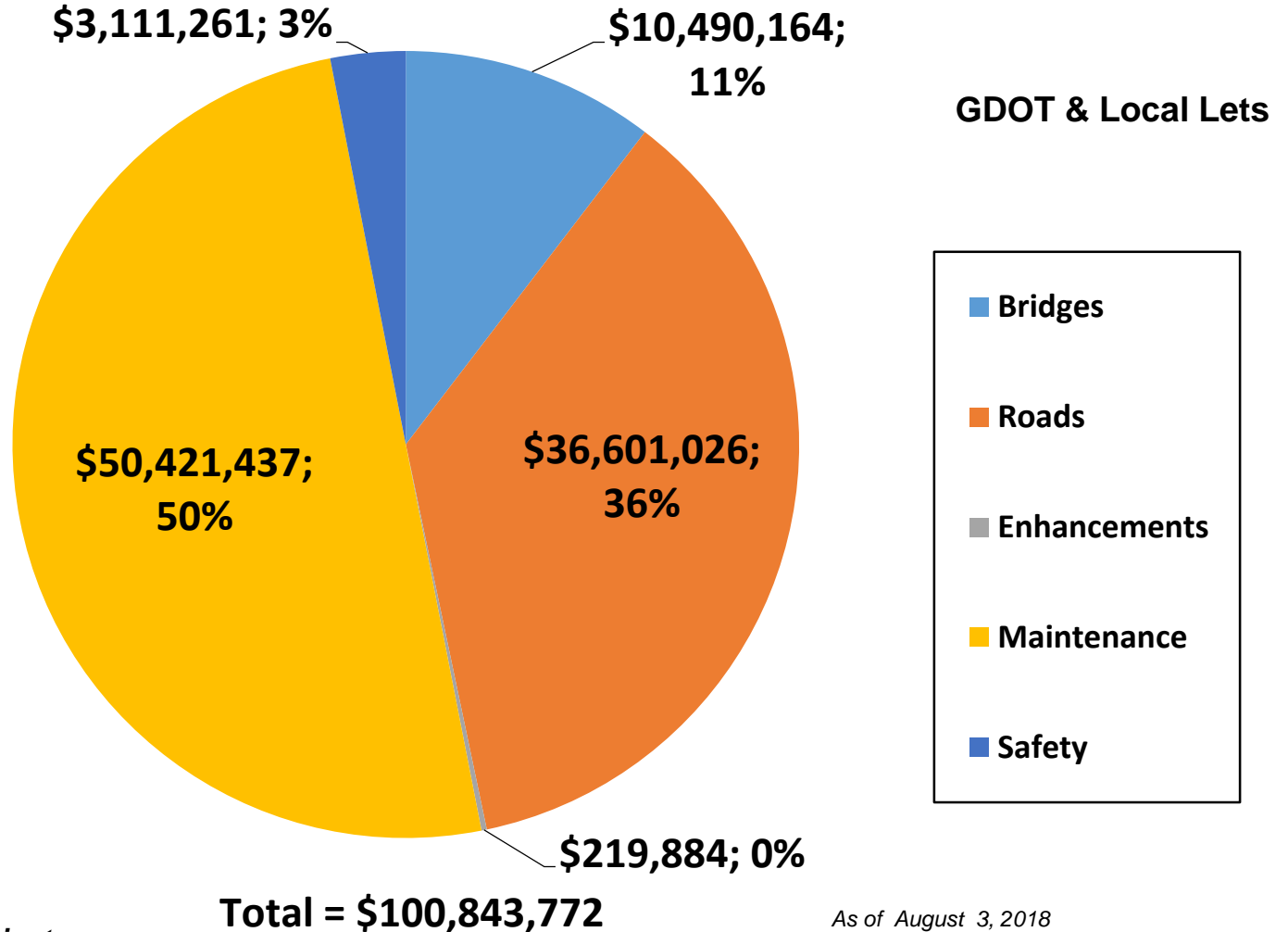
Does not include LMIG Projects

*As of August 3, 2018
Source Construction Bidding Administration*

Fiscal Year 2019 Letting Report

Dollar Amount of Projects Let in FY 2019

(Contractor Low Bid Award Data)



Does not include LMIG Projects

*As of August 3, 2018
Source Construction Bidding Administration*

July 2018 Letting Results

Summary	Presented to GDOT Board (Includes Adjustments)	Low Bid (Awarded to Contractor)	Low Bid w/Adjustments (Total Project Obligation)
GDOT Let (Project Count)	23	23	23
GDOT Let (Dollars)	\$99,849,944	\$99,724,148	\$103,611,764
Local Let (Project Count)	2	N/A Local Let	N/A Local Let
Local Let (Dollars)	\$1,119,624	N/A Local Let	N/A Local Let

*Low Bid Award Amount includes the Deferred and Awarded projects.
Does not include Engineering and Inspection, Utilities, Liquid AC, Incentives, LMIG and Rejected projects.

GDOT and Local Let Projects

September 2018 Letting

GDOT and Local Let Projects

September 2018 Letting

Project ID	Description	Primary County	Primary Work Type	Congressional District	Project Let By	Project Sponsor
0008613	I-16 @ CR 310/OLD RIVER RD-INTERCHANGE; INC WIDENING OLD RVR	EFFINGHAM	Widening	1	DOT	Effingham County
M005766	SR 21 FROM 0.02 MI S OF SR 30 TO 0.24 MI S OF NS #916917C	EFFINGHAM	Resurface & Maintenance	1	DOT	GDOT
0011688	SR 158 @ SATILLA RIVER; OVERFLOW & FULLWOOD CREEK	WARE	Bridges	1	DOT	GDOT
0011683	SR 253 @ SPRING CREEK 12 MI SW OF BAINBRIDGE	DECATUR	Bridges	2	DOT	GDOT
M005685	SR 1; SR 3; SR 37 & SR 520 @ 9 LOC - BRIDGE PRESERVATION	DOUGHERTY	Bridges	2	DOT	GDOT
M005855	SR 27 FROM 0.04 MI N OF SR 50 TO STEWART COUNTY LINE	QUITMAN	Resurface & Maintenance	2	DOT	GDOT
M005070	SR 26 FROM CS 603/STAGECOACH ROAD/MACON TO SR 7/HOUSTON	MACON	Resurface & Maintenance	002, 008	DOT	GDOT
0007043	SR 18 @ CSX RR	MERIWETHER	Bridges	3	DOT	GDOT
M005292	SR 100 FROM S OF CS 813/RD HILL ST/MERIWETHER TO SR 54/TROUP	MERIWETHER	Resurface & Maintenance	3	DOT	GDOT
M004921	I-85 FROM ALABAMA STATE LINE TO SR 219	TROUP	Resurface & Maintenance	3	DOT	GDOT

GDOT and Local Let Projects

September 2018 Letting

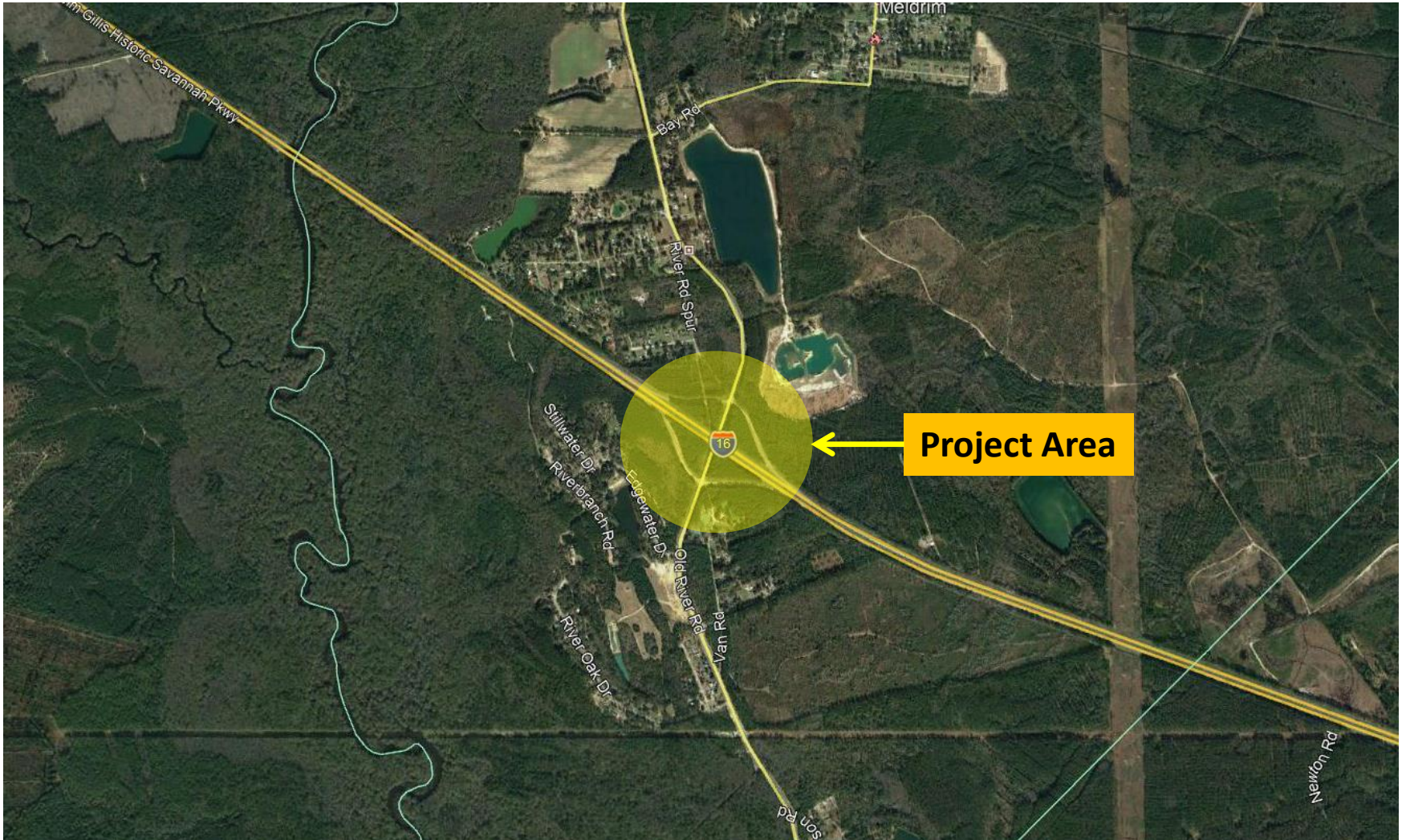
Project ID	Description	Primary County	Primary Work Type	Congressional District	Project Let By	Project Sponsor
M005663	SR 54 FROM CLAYTON COUNTY LINE TO CS 3279/UNIVERSITY AVE	FULTON	Resurface & Maintenance	5	DOT	GDOT
M005800	SR 6 FROM CS 6351/DESERT DRIVE TO CS 1018/CONLEY STREET	FULTON	Resurface & Maintenance	5	DOT	GDOT
M005801	SR 92 FROM CHEROKEE COUNTY LINE TO FULTON COUNTY LINE	COBB	Resurface & Maintenance	6	DOT	GDOT
M005689	SR 141 FROM SHALLOWFORD ROAD/PEACHTREE ROAD TO SR 141 CONN	DEKALB	Resurface & Maintenance	006, 007	DOT	GDOT
M005676	I-575 @ 7 LOCS - BRIDGE PRESERVATION	COBB	Bridges	006, 011	DOT	GDOT
M005451	I-985 FROM I-85/GWINNETT TO SR 369/HALL	HALL	Pavement Markings	007, 009	DOT	GDOT
M005836	SR 127 FROM CR 535/HOUSTON LAKE ROAD TO SR 247	HOUSTON	Pavement Preservation	8	DOT	GDOT
M005167	SR 35 FROM TIFT COUNTY LINE TO SR 32	IRWIN	Resurface & Maintenance	8	DOT	GDOT
M005827	SR 3 ALT FROM 0.07 MI S OF CS 885/PINE STREET TO SR 111	THOMAS	Pavement Preservation	8	DOT	GDOT
M005734	SR 17BU & SR 17 FROM N OF SR 17 TO N OF BEAVERDAM FARM ROAD	FRANKLIN	Resurface & Maintenance	9	DOT	GDOT

GDOT and Local Let Projects

September 2018 Letting

Project ID	Description	Primary County	Primary Work Type	Congressional District	Project Let By	Project Sponsor
M005738	SR 17 FROM N OF CR 1119/BEAVERDAM FARM ROAD TO S OF SR 51	FRANKLIN	Resurface & Maintenance	9	DOT	GDOT
621595-	SR 53 FROM E OF FOUR MILE CHURCH ROAD TO E OF WILKIE ROAD	PICKENS	Passing Lanes	9	DOT	GDOT
M005595	SR 83 FROM SR 12/US 129 TO WALTON COUNTY LINE	MORGAN	Resurface & Maintenance	10	DOT	GDOT
0010649	CS 791/VALLEY STREET FROM DEPOT STREET TO HOWELL BRIDGE ROAD	CHEROKEE	TE-Bike/Ped Facility	11	LOC	Ball Ground
0013705	RIVER LEVEE TRAIL EXT FM RVR LEVEE TRAIL TO 13TH ST-PH III D	RICHMOND	Bicycle/Ped. Facility	12	LOC	Augusta Canal Authority
0006644	UNION CITY PEDESTRIAN SYSTEM - PHASE II	FULTON	TE-Bike/Ped Facility	13	LOC	Union City
M005722	SR 53 FROM NS #719091Y TO 0.08 MI N OF SR 140	FLOYD	Resurface & Maintenance	14	DOT	GDOT
0011686	SR 61 @ CSX #340636X 7.9 MI N OF CRANDALL	MURRAY	Bridges	14	DOT	GDOT
0015760	SIGNING & PAVEMENT MARKINGS @ 111 CSX RR LOCS IN DISTRICT 1	APPLING	RRX Signing & Marking	99	DOT	GDOT

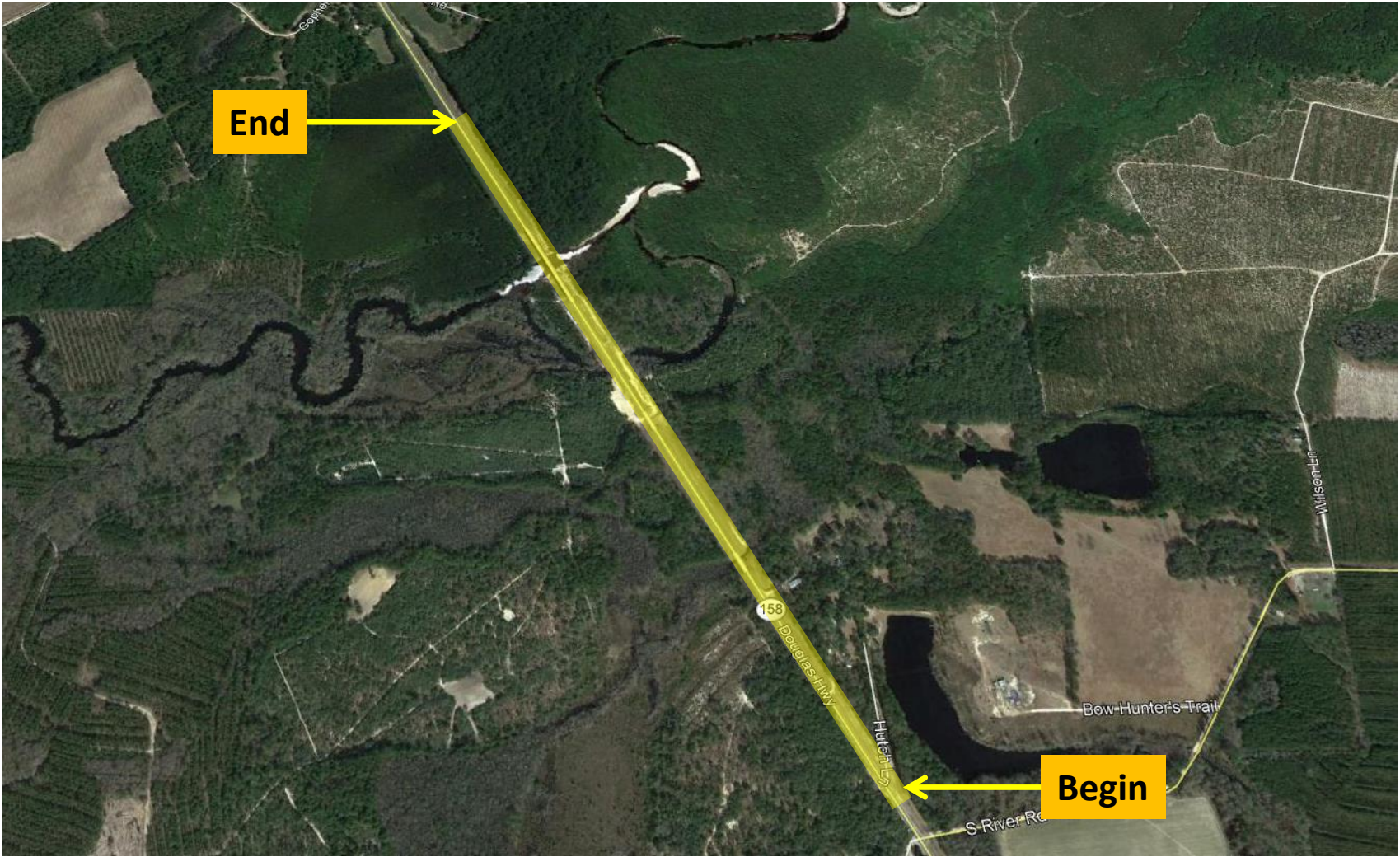
I-16 @ CR 310/OLD RIVER RD-INTERCHANGE; INC WIDENING OLD RVR Interchange/Widening Project in Effingham County Congressional District 1



SR 158 @ SATILLA RIVER; OVERFLOW & FULLWOOD CREEK

Bridge Replacement Project in Ware County

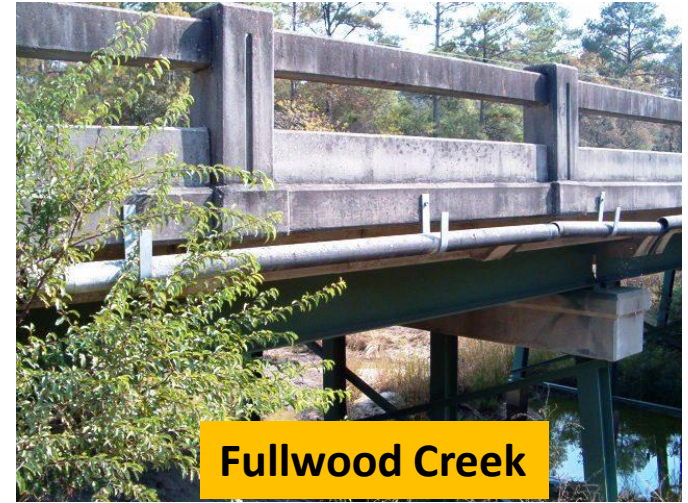
Congressional District 1



SR 158 @ SATILLA RIVER; OVERFLOW & FULLWOOD CREEK

Bridge Replacement Project in Ware County

Congressional District 1 (Continued)



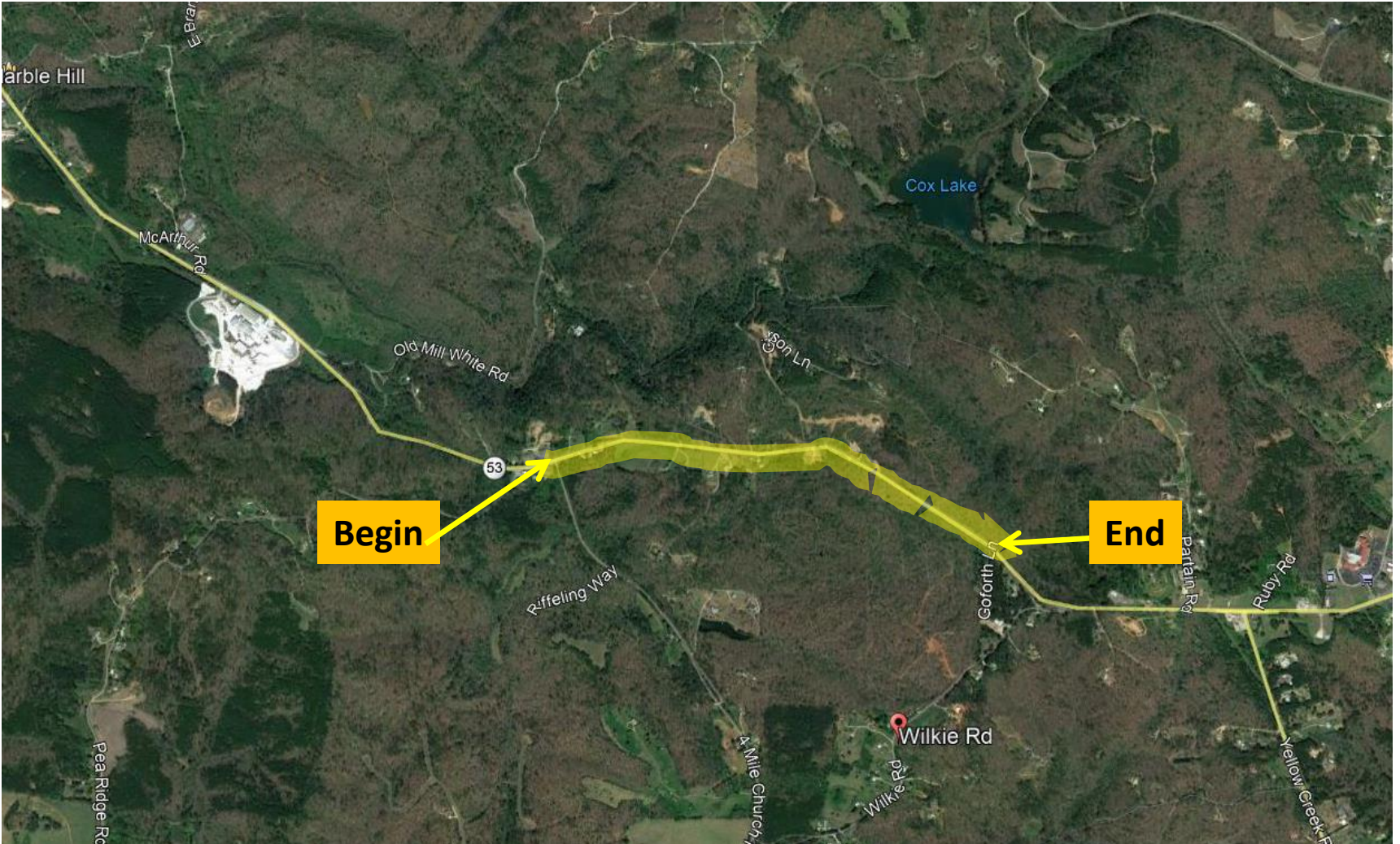
I-85 FROM ALABAMA STATE LINE TO SR 219 Resurfacing Project in Harris and Troup County Congressional District 3



I-985 FROM I-85/GWINNETT TO SR 369/HALL Pavement Marking Project in Gwinnett and Hall Counties Congressional Districts 7 and 9



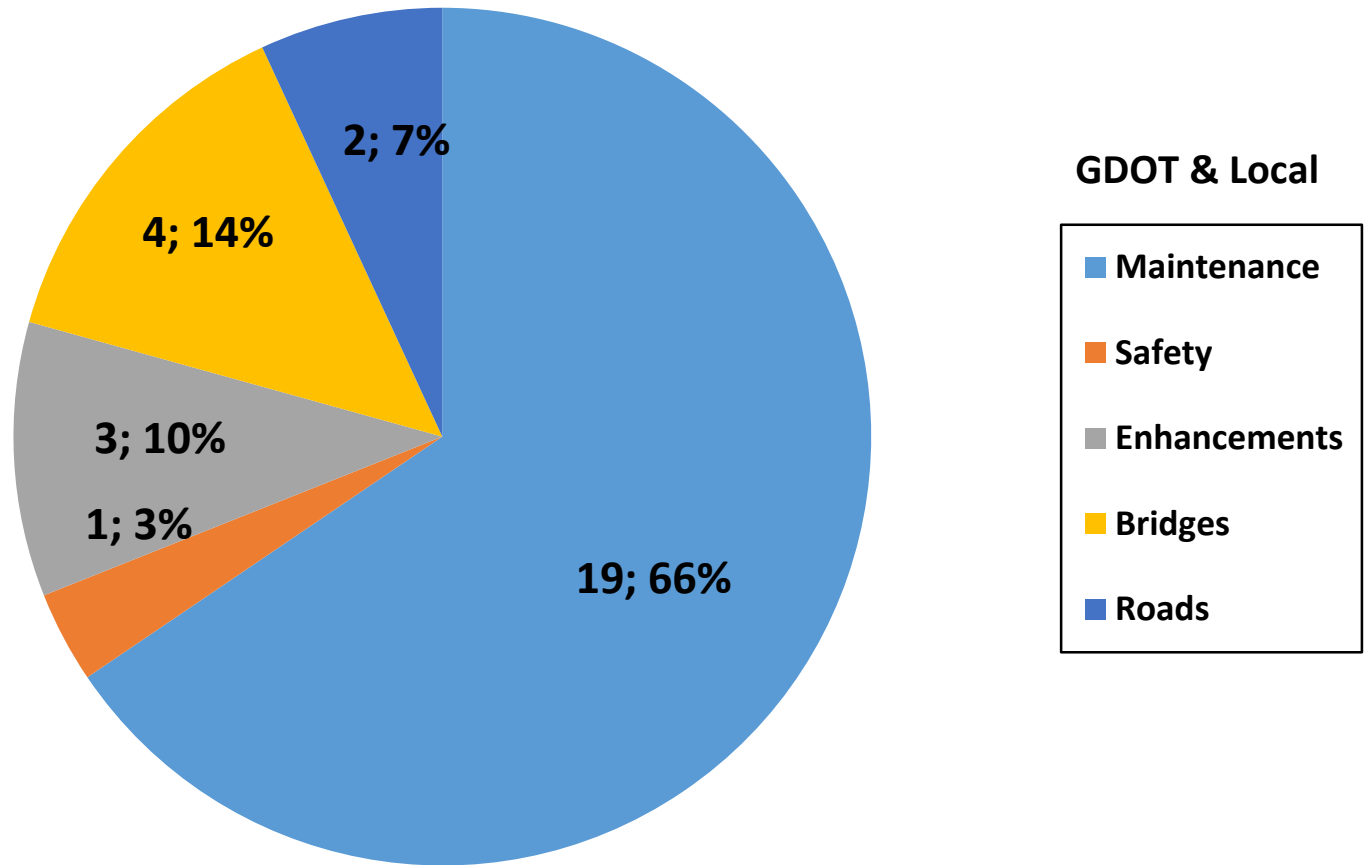
SR 53 FROM E OF FOUR MILE CHURCH ROAD TO E OF WILKIE ROAD Passing Lane Project in Pickens County Congressional District 9



Fiscal Year 2019 Letting Report

Number of Projects

September 2018 Letting



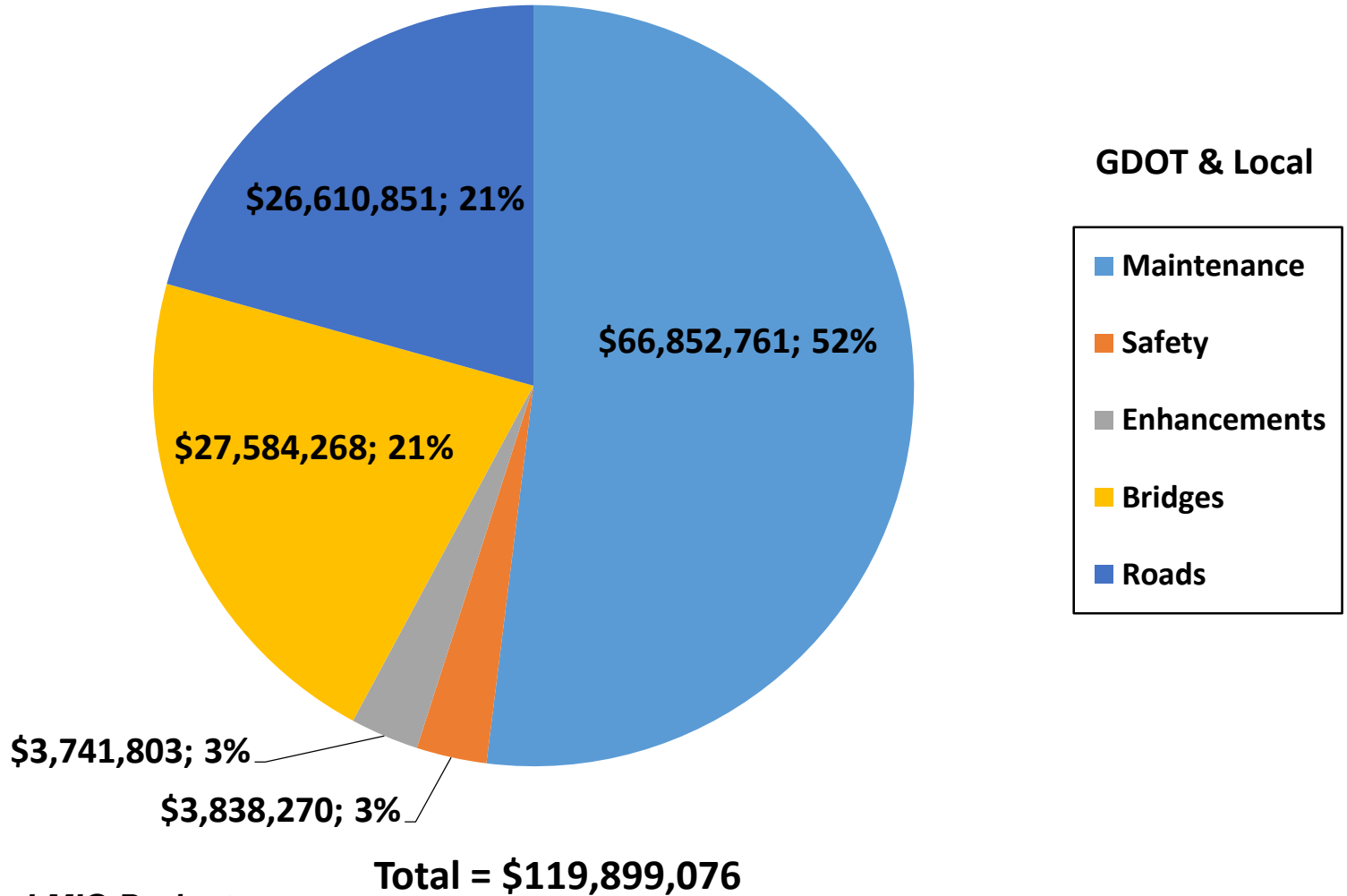
Total = 29

Does not include LMIG Projects

*As of August 8, 2018
Source TPro – Chief Approved FY '19 Letting List*

Fiscal Year 2019 Letting Report

Dollar Amount of Projects September 2018 Letting



Does not include LMIG Projects

Board Approval